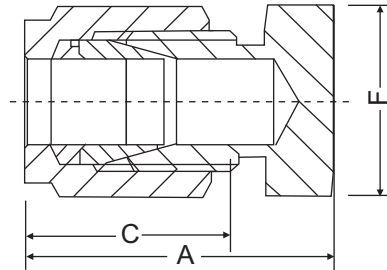



**Dimensional Details :**


Notes : Drawings are not to scale

**Dimensional Details**
**Dimension, in.**

Tube OD	Part Number	A	C	F
1/8	<b>S2CP2</b>	0.79	0.50	7/16
1/4	<b>S4CP4</b>	0.92	0.60	1/2
3/8	<b>S6CP6</b>	1.01	0.66	5/8
1/2	<b>S8CP8</b>	1.15	0.90	13/16
5/8	<b>S10CP10</b>	1.18	0.96	15/16
3/4	<b>S12CP12</b>	1.24	0.96	1 1/16
7/8	<b>S14CP14</b>	1.34	1.02	1 3/16
1	<b>S16CP16</b>	1.51	1.23	1 3/8

**Dimension, mm.**

Tube OD	Part Number	A	C	F
6	<b>SM6CPM</b>	23.1	15.3	1/2
8	<b>SM8CPM</b>	24.5	16.2	9/16
10	<b>SM10CPM</b>	26.6	17.2	11/16
12	<b>SM12CPM</b>	29.1	22.8	13/16
16	<b>SM16CPM</b>	29.9	24.4	15/16
18	<b>SM18CPM</b>	31.4	24.4	1 1/16
20	<b>SM20CPM</b>	34.0	26.0	13/16
25	<b>SM25CPM</b>	38.5	31.3	1 3/8

Dimensions and specifications shown are approximate, may vary from time to time.

**Note :** A and C dimensions are typical finger-tight